

# USF Research & Innovation

NEW FACULTY ORIENTATION

August 2023



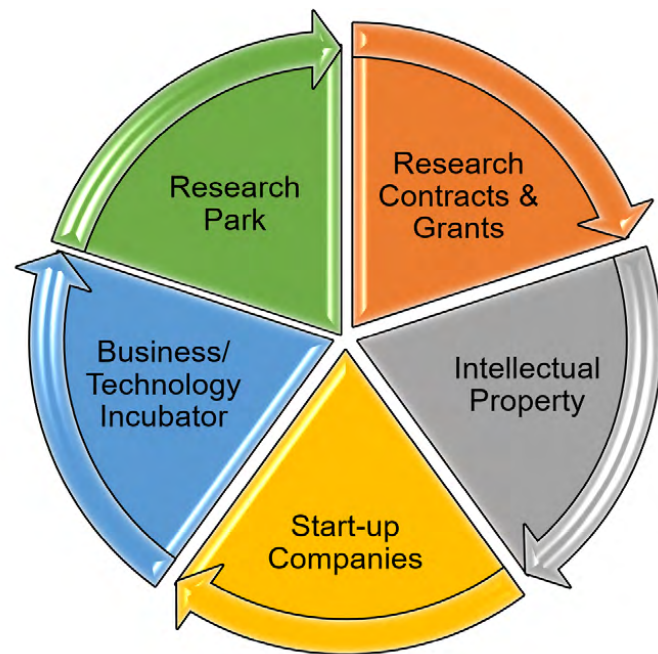
# Welcome New Faculty!



[research.usf.edu](https://research.usf.edu)

# USF Research & Innovation: Supporting USF's Research Infrastructure

- **Buildings, labs, equipment, staff**
- **Central Expert Support** to help faculty and colleges:
  - Find, apply for, and manage **research funding** from “cradle to grave”
  - Comply with **regulations**
  - Protect and develop **intellectual property & new products** through patents and licensing
  - Spin out and incubate **new businesses**
  - Facilitate **economic development**



**Life Cycle of Research**



## **Sylvia Wilson Thomas, Ph.D.**

*Interim Vice President for Research & Innovation  
President & CEO of the USF Research Foundation, Inc.*

[sylvia@usf.edu](mailto:sylvia@usf.edu)

[research.usf.edu](https://research.usf.edu)





## Keith Anderson

*Assistant Vice President for  
Research & Innovation*

[kanderson@usf.edu](mailto:kanderson@usf.edu)

[research.usf.edu](https://research.usf.edu)

# ROI of Research & Innovation: Advancing USF's Mission

- Enabling world class faculty **recruitment, retention, and faculty success**
- Supporting **student success**
- Raising USF's **visibility** as a leading higher education institution
- Increasing opportunities for **funding**
- Providing **public benefit**
- Supporting fundraising efforts and **philanthropy**
- Supporting **economic development** and **jobs**
- Promoting a **culture of entrepreneurship & innovation**

# Sponsored Research



**Eric Kern, MBA**

*Director*

(813) 974-6001

[ericmkern@usf.edu](mailto:ericmkern@usf.edu)

[usf.edu/research-innovation/sr](https://usf.edu/research-innovation/sr)

# Sponsored Research

*Your Partners in Research Administration!*

## Pre-Award Services

- Funding Searches
- Electronic Research Services
- Proposal Preparation & Submission
- Contract & Subcontract Negotiations
- Regulatory Compliance
- Sponsor Liaison
- Preliminary Award Setup
- Subcontracting & Subrecipient Monitoring



## Post-Award Services

- Award Setup
- Financial Management
- Sponsor Invoicing and Reporting
- Expenditure Transfers
- Override Requests
- Effort Reporting
- Compliance and Risk Management
- Closeouts & Retention

[usf.edu/research-innovation/sr](https://usf.edu/research-innovation/sr)



# Faculty One-Stop



**Faculty One-Stop** provides USF researchers with quick links to guides, instructions, tools, forms, online training, and more

- Search for funding
- Proposal development
- Proposal submission
- Compliance
- Financial/technical administration

[usf.edu/research-innovation/train/train-facultyone-stop.aspx](https://usf.edu/research-innovation/train/train-facultyone-stop.aspx)

# Other Quick Resources

- [Sponsored Research @YourService](#)
- [Sponsored Research Contact Information](#) to find your Sponsored Research Administrator (SRA) / Grant Financial Administrator (GFA)
- [Internal Form](#)
- [Internal Awards Program](#)

[usf.edu/research-innovation/sr](https://usf.edu/research-innovation/sr)

# Video: Welcome to USF Sponsored Research



<https://youtu.be/pRTQfz7KwN4>

# Research Integrity & Compliance

*Protecting You and the University*



**Jay Ramage, Ph.D., MS, MBA, PMP**

*Director*

*(813) 974-2302*

*[jramage@usf.edu](mailto:jramage@usf.edu)*

**[usf.edu/research-innovation/research-integrity-compliance](https://usf.edu/research-innovation/research-integrity-compliance)**



# Research Integrity & Compliance

- Human Research Protection Program
  - Institutional Review Board (IRB)
  - HIPAA Privacy Program
  - Quality Assurance/Quality Improvement Program
- Institutional Animal Care and Use Committee (IACUC)
- Institutional Biosafety Committee (IBC)
- Export Controls
- Foreign Influence in Research
- Conflict of Interest (COI) in Research
- Scientific Diving Safety
- Boating Safety
- Radiation Safety
- Laser Safety
- Ethyl Alcohol
- Responsible Conduct of Research
- DEA Controlled Substances



# Research Integrity & Compliance

## **Our Mission:**

To ensure research performed within the university system is safe and ethical; to facilitate the conduct of research; to comply with applicable regulations, laws, and institutional policies; and thereby, promote a culture of integrity in research.

## **Our Goal:**

To facilitate research by making it as streamlined and effortless as possible. We strive to educate the researcher in all areas involving research compliance, to aid them in the process and to maintain open communication.

# USF Technology Transfer Office (TTO)



**Michele Tyrpak, J.D.**

*Director of Tech Engagement & Commercialization*

*(813) 974-3732*

*[mtyrpak@usf.edu](mailto:mtyrpak@usf.edu)*

**[usf.edu/techtransfer](https://usf.edu/techtransfer)**

A photograph of a hallway wall covered in numerous framed patent documents. The documents are arranged in a grid pattern. Above the documents, the words "PATENTED USE INNOVATION" are written in large, raised, silver letters. The hallway is brightly lit, and the floor is a light-colored material.

PATENTED USE INNOVATION

Ranked in the  
**TOP 15**  
American Public  
Research Universities  
for **U.S. Patents**



# Technology Transfer Office – the ‘I’ in R&I

- Connects you with industry-sponsored research funding
- Protects your intellectual property: patents, copyrights, trademarks, data, and research tools (cell lines, antibodies, mouse models)
- Provides confidentiality and material transfer agreements so you can collaborate and exchange samples
- Assists with the commercialization section of grants, letters of support
- Performs patent searches for future research projects
- Creates startups based on your technologies

## USF's Tenure & Promotion Policy

Recognizes “the impact of applied work, e.g., through inventions, development and potential commercialization of intellectual property, and technology transfer.”

# Move Beyond Just Publishing

*Maximize the Impact of Your Research Through Innovation*

## *USF Technology Transfer Office*

[TTOinfo@usf.edu](mailto:TTOinfo@usf.edu)

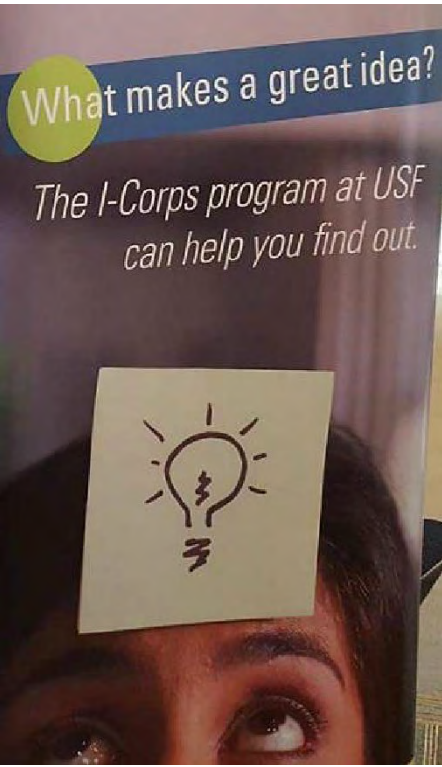
813-974-0994

[usf.edu/techtransfer](http://usf.edu/techtransfer)

3702 Spectrum Blvd., Suite 165  
Tampa, FL 33612

# NSF I-Corps at USF

*Transitioning your Ideas & Inventions into the Marketplace*



[innovation.usf.edu/icorps](https://innovation.usf.edu/icorps)



the  
florida  
high tech  
corridor

---

# Matching Grants Research Program

Providing additional funding for sponsored research projects  
completed in collaboration with local industry partners.



**Elizabeth Nelson, MBA**

*Program Director*

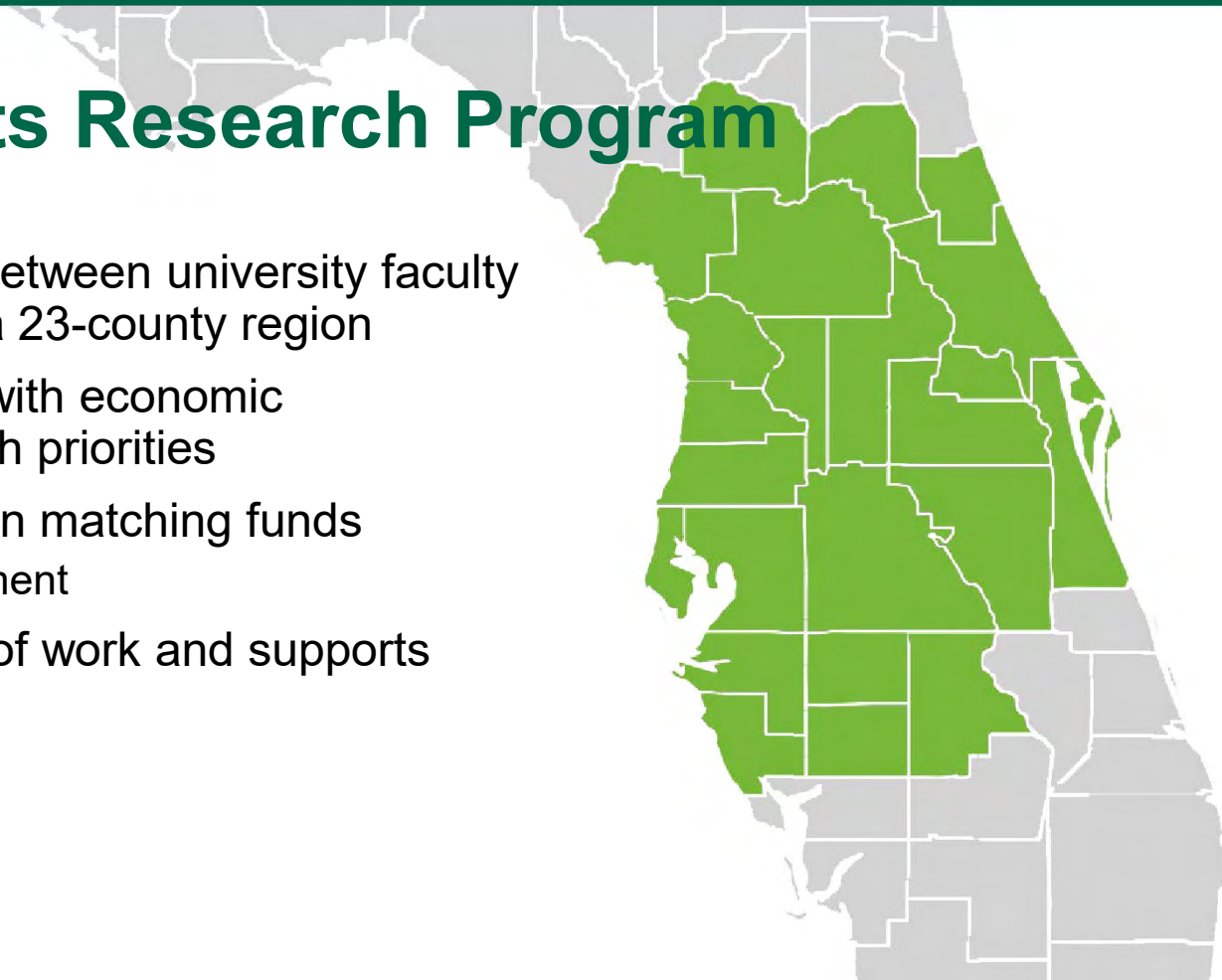
*(813) 974-3291*

*[ernelson1@usf.edu](mailto:ernelson1@usf.edu)*

**[usf.edu/corridor](https://usf.edu/corridor)**

# Matching Grants Research Program

- Foster applied research between university faculty and local industry within a 23-county region
- Supports projects in line with economic development and research priorities
- Provides up to \$150,000 in matching funds
  - Matches industry investment
- Expands project's scope of work and supports student participation



# USF CONNECT



**Shannon Pastizzo**

*Program Director*

(813) 974-2463

[spastizzo@usf.edu](mailto:spastizzo@usf.edu)

[www.usfconnect.org](http://www.usfconnect.org)

# USF CONNECT

INCUBATION: MORE THAN A PLACE

## USF's Innovation Enterprise is made up of three areas:

- Tampa Bay Technology Incubator (TBTI)
- Technology Transfer Office (TTO)
- USF Research Park

## SERVICES PROVIDED

- Networking opportunities, partner events, and educational workshops and seminars
- Professional business facilities, shared lab space and research equipment
- Network of mentors, entrepreneurs in residence and industry experts
- Access to top-tier research faculty & students

**\$582M+\***

USF Innovation Enterprise  
annual statewide impact

**\$548M+\***

USF Innovation Enterprise  
annual impact on the Tampa Bay region





# Tampa Bay Technology Incubator



Reporting Period: October 2020 - December 2021

**\$186M**

Total funding received  
by TBTI companies to date

**\$26M+**

Annual salaries paid by  
current TBTI companies



**61** INCUBATOR COMPANIES SERVED THIS PAST YEAR  
**168** PATENTS RECEIVED BY TBTI COMPANIES TO DATE  
**350** JOBS CREATED AND RETAINED WITH SALARIES  
FOR PAID POSITIONS AVERAGING **\$80,501** IN 2021

# Tampa Bay Technology Incubator (TBTI)

- Entrepreneurial **support** services & physical **infrastructure**
- Only tech business incubator in the region to support bio and life science companies with state-of-the-art **wet labs**
- Over 50% of TBTI companies focus on **bio & life sciences**
- About 44% of TBTI companies are commercializing **technologies** developed by **USF** researchers
- Selective **vetting** process





# Student Innovation Incubator (SII)



27

Companies accepted into the  
Student Innovation Incubator  
class of 2021-2022



**219** STUDENT-LED COMPANIES SINCE 2013; AVERAGE 25 EACH YEAR  
MENTORS, CO-WORKING SPACE, NETWORKING WITH COMMUNITY  
PARTNERS, AND BUSINESS TRAINING, INCLUDING I-CORPS  
PROGRAMMING IN A HYBRID MODEL





# USF Research Foundation, Inc.



**Allison Madden,  
MBA**

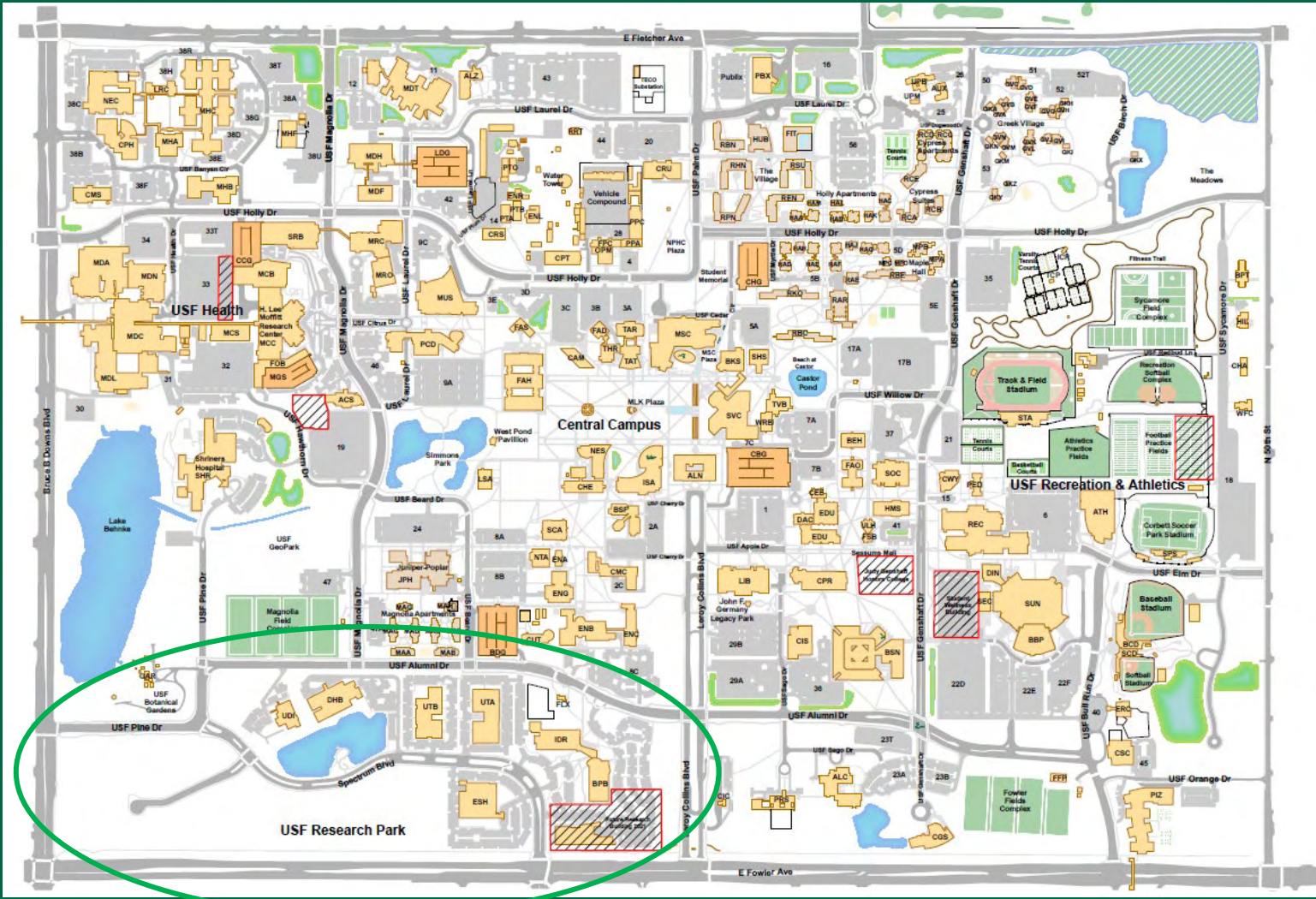
*Chief Operating Officer  
and Corporate Secretary*  
(813) 974-5095  
[amadden@usf.edu](mailto:amadden@usf.edu)



**Michelle Hickey**

*Director of Finance*  
(813) 974-6171  
[mhhickey@usf.edu](mailto:mhhickey@usf.edu)

[usf.edu/research-innovation/rf](https://usf.edu/research-innovation/rf)



USF Research Park

USF Health

Central Campus

USF Recreation & Athletics

E Fowler Ave

Bruce B Downs Blvd

E Fletcher Ave

Lake Behrke

USF Beaud Dr

Spectrum Blvd

Lenny Colville Blvd

E Fowler Ave

USF Elm Dr

USF Orange Dr

USF Elm Dr

USF Willow Dr

USF Holly Dr

USF Laurel Dr

E Fletcher Ave

USF Holly Dr

USF Laurel Dr

E Fletcher Ave

USF Laurel Dr

USF Laurel Dr

E Fletcher Ave

USF Holly Dr

USF Holly Dr

E Fletcher Ave

USF Holly Dr

USF Holly Dr

E Fletcher Ave

USF Holly Dr

USF Holly Dr

E Fletcher Ave

USF Holly Dr

USF Holly Dr

E Fletcher Ave

USF Holly Dr

USF Holly Dr

E Fletcher Ave

USF Pine Dr

USF Pine Dr

USF Pine Dr

USF Pine Dr

USF Pine Dr

USF Pine Dr

USF Alumni Dr

USF Alumni Dr

USF Alumni Dr

USF Alumni Dr

USF Alumni Dr

USF Alumni Dr

USF Alumni Dr

USF Alumni Dr

USF Alumni Dr

USF Alumni Dr

USF Alumni Dr

USF Alumni Dr

USF Alumni Dr

USF Alumni Dr

USF Alumni Dr

USF Alumni Dr

USF Alumni Dr

USF Alumni Dr

USF Alumni Dr

USF Alumni Dr

USF Alumni Dr

USF Alumni Dr

USF Alumni Dr

USF Alumni Dr

USF Alumni Dr

USF Alumni Dr

USF Alumni Dr

USF Alumni Dr

USF Alumni Dr

USF Alumni Dr

USF Alumni Dr

USF Alumni Dr

USF Alumni Dr

USF Alumni Dr

USF Alumni Dr

USF Alumni Dr

USF Geopark

USF Geopark

USF Geopark

USF Geopark

USF Geopark

USF Geopark

USF Geopark

USF Geopark

USF Geopark

USF Geopark

USF Geopark

USF Geopark

USF Geopark

USF Geopark

USF Geopark

USF Geopark

USF Geopark

USF Geopark

USF Geopark

USF Geopark



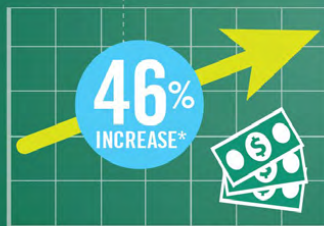
# USF's Innovation Enterprise

2019 | Significant and Growing Economic Impact Since 2016\*

**\$582+**  
MILLION



statewide impact each year



**\$314 MILLION**  
in direct  
gross domestic  
product value  
**ADDED**



**\$71 MILLION**  
returned in local, state  
and federal tax revenue

**37% INCREASE\***

Sustains  
**4,000+ JOBS**



**35% INCREASE\***



USF's Innovation Enterprise  
is made up of 4 areas:

- USF Research Park
- Tampa Bay Technology Incubator (home to 70+ resident & affiliate companies)
- Technology Transfer Office / Patents & Licensing
- Office of Corporate Partnerships



UNIVERSITY OF  
SOUTH FLORIDA

\*Percentage Increase from 2016.

From "The Economic Impacts of USF's Innovation Enterprise on the Tampa MSA and the State of Florida" by The Washington Economics Group, Inc. (2019)

## TAMPA BAY BUSINESS JOURNAL



COMMUNITY IMPACT

### USF RESEARCH PARK EXPANSION

The USF Research Park Expansion features the design and construction of the "core and shell" of a 120,000-square-foot, three-story building with a fourth-floor open-air terrace and dining options on the ground floor.

A mix of office space and labs, firms in the building can build their facilities to their personal preferences. Construction is on schedule to be completed in December with a grand opening in early 2022.

The project is the first expansion in more than a decade for the location and will increase the inventory at the research park by 34%, from 349,807 square feet to 469,807 square feet.

This development will open as USF is selecting a new president.

— Breanne Williams



#### BIGGEST CHALLENGE

"The ingenuity of faculty, staff and students in addressing the scientific, medical and technical issues presented by the pandemic came into full view and generated national and international attention," honorees shared with judges. "Despite supply chain issues and industrywide labor challenges, Skanska USA has kept the building on schedule and on budget."



# Collaborative Spaces Indoors and Out





# 3814 Spectrum USF Research Park

Mixed Use | Lab | Office | Dining



<https://youtu.be/T5xPFYzDplg>





# Welcome to the USF Research Park

OUR COMMUNITY IS STRONGER BECAUSE OF YOU

# Florida Inventors Hall of Fame

- The Florida Inventors Hall of Fame is a state-wide initiative dedicated to honoring and celebrating Florida inventors whose achievements have significantly advanced quality of life for all Americans.
- The Florida Inventors Hall of Fame has inducted more than 58 notable inventors who collectively hold over 4,000 patents.
- Located at the USF Research Park in Tampa, the Florida Inventors Hall of Fame Museum exhibits an engaging collection of inductees' inventions, free and open to the public.





# Florida Inventors Hall of Fame 2021 Induction Ceremony



<https://www.youtube.com/watch?v=s3qX9T61PHk>

# Faculty Honors, Prizes & Awards



**Victoria Stuart, Ph.D.**

*Program Director*

(813) 974-0466

[vlstuart@usf.edu](mailto:vlstuart@usf.edu)

[awards.research.usf.edu](https://awards.research.usf.edu)

# Faculty Honors, Prizes & Awards



- Public Recognition for your work and career achievements
- Make Connections with colleagues worldwide
- Time and Support for your research projects

[awards.research.usf.edu](https://awards.research.usf.edu)

# Faculty Honors, Prizes & Awards

## We Can Help You:

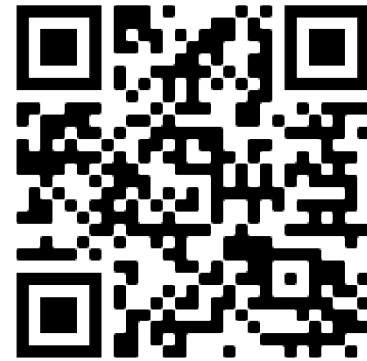
- Find Awards  
For every career level
- Workshops & Webinars  
For how-to & best practices
- Application Support  
Connect with experts
- Share News  
Publicize your achievement



# Faculty Honors, Prizes & Awards



»»» Start Your Awards  
Journey Here «««



[awards.research.usf.edu](https://awards.research.usf.edu)

# Research & Innovation Across the University

## USF St. Petersburg campus



### John Johnson

*Associate Director  
Research & Innovation  
St. Petersburg campus  
(727) 873-4985  
[jtj2@usf.edu](mailto:jtj2@usf.edu)*

[stpetersburg.usf.edu/research](https://stpetersburg.usf.edu/research)

## USF Sarasota-Manatee campus



### Sandy Justice

*Associate Director  
Research & Innovation  
Sarasota-Manatee  
campus  
(941) 359-4330  
[sjustice@usf.edu](mailto:sjustice@usf.edu)*

[sarasotamanatee.usf.edu/research](https://sarasotamanatee.usf.edu/research)



# Research in St Petersburg

USF St Petersburg campus has over 110 externally funded projects totaling more than \$23,000,000 annually.



UNIVERSITY of  
**SOUTH FLORIDA**  
ST. PETERSBURG

The St. Petersburg campus is home to faculty in seven different colleges of the University of South Florida.

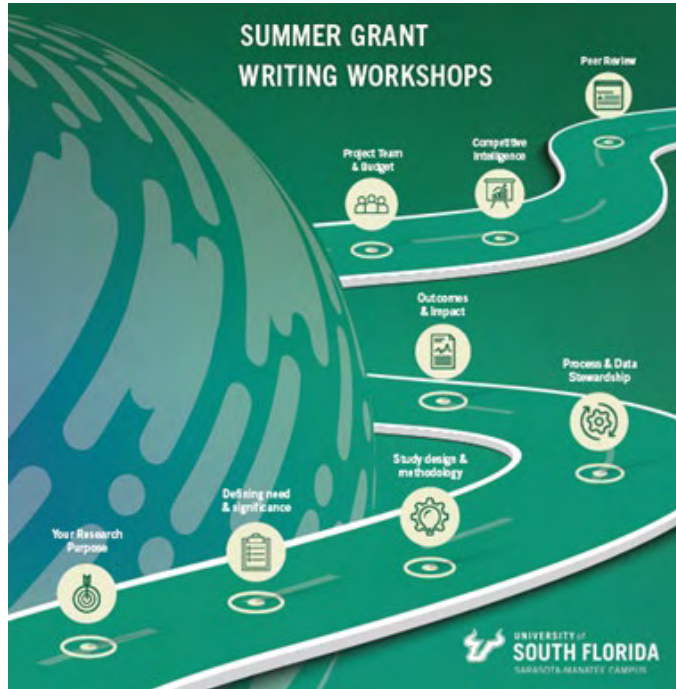


A close-up photograph of a sea turtle resting on a sandy beach. The turtle's head is in the foreground, facing left, and its body extends towards the right. The sand is light-colored and textured. The background is slightly blurred, showing more of the beach and some greenery.

# Research at USF Sarasota-Manatee campus

[sarasotamanatee.usf.edu/research](https://sarasotamanatee.usf.edu/research)

# USF Summer Grant Writing Workshops



**Offered each Summer  
Fully online & Asynchronous  
Available to All Researchers**

# USF Sarasota Manatee campus Research Magazine

Research: **USF** SARASOTA  
MANATEE  
CAMPUS

RESEARCH ARCHIVE CONTACT US



Our premier publication showcasing the faculty and student researchers at the USF Sarasota Manatee campus.

Themes include:

- Building a More Just Society
- Pandemic Response
- The Future of Interdisciplinary Research

[researchmagazine.sarasotamanatee.usf.edu](https://researchmagazine.sarasotamanatee.usf.edu)

# Seed Grants

Faculty Internal Awards are activating research across the University of South Florida!



USF INTERNAL  
AWARDS PROGRAM



USF ST.  
PETERSBURG  
PARTNERSHIP  
DEVELOPMENT  
GRANTS



USF SARASOTA-  
MANATEE  
INTERDISCIPLINARY  
RESEARCH GRANTS



RESEARCH ONE



SEED GRANTS  
WITHIN YOUR  
COLLEGE



# Research Communications & Marketing



## **Ann Comer-Woods**

*Assistant Director, Communications & Marketing*

*(813) 396-2664*

*[anncomerwoods@usf.edu](mailto:anncomerwoods@usf.edu)*

**[usf.edu/research-innovation/news](https://usf.edu/research-innovation/news)**

# Share your stories of research, innovation and professional achievements



Research & Innovation  
Excellence



Local, National & International  
Honors



Inspiring a  
New Generation



# USF Magazines Featuring Research & Innovation



[USF Magazine](#)



[Innovations Magazine](#)  
St. Petersburg Campus



[Research Magazine](#)  
Sarasota-Manatee Campus

# Press Coverage of USF Researchers: Information, Insights & New Ideas

**USF researchers ask for public's help to track mosquito population in Tampa Bay**  
Health officials confirmed six malaria cases in Sarasota County.



Researchers at the University of South Florida are asking for the public's help to track mosquitoes in the Tampa Bay area. Ryan Carney, Assistant Professor of Digital Science at USF, and other researchers created MosquitoDashboard.org. The dashboard maps data from three apps: Mosquito Alert, Mosquito Observers, and Mosquito Alert. Carney said people may download one of the apps and upload photos of dead or alive mosquitoes. USF uses the data collected to identify the species of mosquitoes using artificial intelligence.

By Julie Salomone  
Posted on 8/17/2023 and last updated 10:45 AM, Jul 13, 2023

**TAMPA, Fla.** — Researchers at the University of South Florida are asking for the public's help to track mosquitoes in the Tampa Bay area.

Ryan Carney, Assistant Professor of Digital Science at USF, and other researchers created MosquitoDashboard.org. The dashboard maps data from three apps: [Naturalist](#), [Globe Observer](#), and [Mosquito Alert](#).

**USFRI Newsroom**  
USF Research & Innovation / USFRI Newsroom / 2023 Articles  
Four USF faculty elected to Academy of Science, Engineering and Medicine of Florida

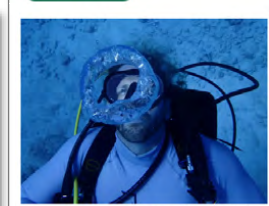
## Four USF faculty elected to Academy of Science, Engineering and Medicine of Florida

JUNE 8, 2023 | HONORS AND AWARDS  
Professors Norma Alcantar, Robert Bishop, Subhra Mohapatra, and Robert Weisberg recognized for their research

**TAMPA, Fla. (June 8, 2023)** — Four University of South Florida professors have been elected to the **Academy of Science, Engineering and Medicine of Florida (ASEM-FL)** in recognition of their innovative research. The new members are **Norma Alcantar**, Professor of Chemical, Biological and Materials Engineering, Associate Dean for Research in the College of Engineering, and a member of the Florida Inventors Hall of Fame; **Robert H. Bishop**, Distinguished University Professor and Dean of the College of Engineering; **Subhra Mohapatra**, Professor of Molecular Medicine at USF Health Morsani College of Medicine and Research Career Scientist; **James A. Haley Veterans Hospital**; and **Robert Weisberg**, Distinguished University Professor Emeritus of Physical Oceanography at the College of Marine Science.

The ASEM-FL recognizes the work of individuals in Florida who have made significant societal impact in science, engineering and medicine. Dr. Alcantar's work focuses on providing drinking

**A USF researcher attempts to break a world record by living underwater for 100 days**  
WUSF Public Media - WUSF 89.7 | By [Meghan Bowman](#)  
Published March 2, 2023 at 3:46 PM EST



Joseph Ditturi | The University of South Florida

Researcher Joseph Ditturi has embarked on a 100-day mission living underwater to seek benefits for people.

## Joseph Ditturi is searching for ways to reviv environments and test medical technology

A researcher from the University of South Florida is searching marine environments and test medical technology that could diseases in people. But there's one catch: he's doing it all 30 he's trying to do it for 100 days.

SPECTRUM NEWS  
TAMPA | JULY 28, 2023  
GET OUR APP Our Spectrum News app is the most convenient way to get the stories that matter to you. Download it here.

Distinguished University Professor Sudeep Sarkar talks about the AI Certificate offered this fall at USF. (Melissa Eichman-Spectrum Bay News 9)

## USF launching AI certificate program for fall semester

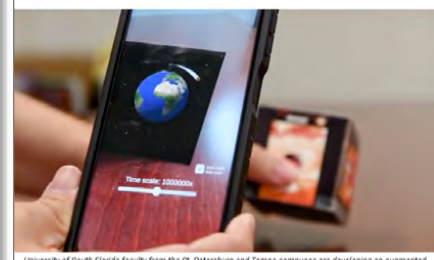
BY MELISSA EICHMAN | TAMPA, FL  
UPDATED 12:05 PM ET JUN. 11, 2023

The new graduate certificate program will help students seeking a competitive edge in the emerging tech field.

"Unleashing human potential," Sarkar explained. "That's realistically the goal that AI should go towards, not the scary scenarios where they control us."

The Institute for Artificial Intelligence is taking control and will offer an introductory course and others in deep mining, deep learning and computer vision.

**USF faculty develops augmented reality platform**  
Published 8 months ago on December 6, 2022  
By [Mark Parker](#)



University of South Florida faculty from the St. Petersburg and Tampa campuses are developing an augmented reality platform to help teach physics. Screenshot.

Realizing that abstract physics concepts are among the most challenging for students to grasp, faculty from the University of South Florida are utilizing augmented reality to ease the learning curve.

Education and physics professors from the St. Petersburg campus are working with developers from the Advanced Visualization Center in Tampa to help students better comprehend complicated theories on subjects like gravity and electromagnetism. A recent \$300,000 grant from the National Science Foundation (NSF) is funding the creation of augmented reality (AR) simulations to propel understanding and educational results.

Once completed, USF will offer the platform to other schools and museums at no cost. The team is creating six AR simulations that combine real-world experiences with "highly visual and interactive computer-generated content."

The six core concepts include magnetic fields, rotational motion, thermodynamics, optics, forces and circuits. David Rosenberg, campus dean of the College of Education at USFSP, told the *Catalyst* that while there are laws in physics, they apply differently to various aspects,





Follow us on Social Media



[Twitter](#)



[Instagram](#)



[Facebook](#)

@USFResearch